



RACE GUIDE 2025





Welcome

Registration

Event Schedule

Preparation

Route Overview

Stage 1 Profile

Stage 2 Profile

Stage 2 E Profile

Stage 3 Profile

Merchandise

Sponsors

Prizes

Welcome

Welcome to the 2025 Great Zuurberg Trek!

We're thrilled that you decided to join us this year. Whether this is your first time riding with us or you're back for another round, you're part of something truly special – a community brought together by a love of adventure, a challenge, and the beauty of the great outdoors.

Over the next few days, you'll ride through some of the most breathtaking terrain the Eastern Cape has to offer – climbs worthy of the views, sweeping descents, and trails that take you through unspoilt landscapes.

But the Great Zuurberg Trek isn't just about the trails – it's about the people. The laughter at water points, the stories shared over dinner, the friendships forged over the three days. So take it all in. Ride hard, laugh harder, and soak up every second.

Whether you're chasing a time or just soaking up the journey, this is your ride – and we're here to make it unforgettable.

Let's make this one to remember. See you on the trails,

The Great Zuurberg Trek Team

A Message From Our Sponsor

Dear Riders,

On behalf of Rubicon, I'm thrilled to welcome you to this year's Great Zuurberg Trek. It's an honour to sponsor such an exhilarating event that brings together passionate cyclists from all over. The challenging trails, breath-taking landscapes, and the spirit of camaraderie truly make this race an unforgettable experience.

As you embark on this adventure, remember that it's not just about reaching the finish line but also about enjoying every moment of the journey. Push your limits, soak in the stunning surroundings, and most importantly, have fun!

I wish you all the best and hope you have a fantastic ride.

Warm regards,
Greg Blandford
Sales Director: Energy & E-Mobility



EXTRAORDINARY - EXCLUSIVE - CHALLENGING - CAPTIVATING - MEMORABLE



NEW BIKE DAY?

Visit CycloPro PE to find your new
Giant Bicycle



GIANT

Event Schedule

22 MAY	23 MAY	24 MAY	25 MAY
Registration	Stage 1	Stage 2	Stage 3
Registration: 16:00-19:00 at Zuurberg Inn	Breakfast: 06:30-08:00	Breakfast: 06:30-08:00	Breakfast: 06:30-08:00
Dinner: 18:30 at respective race village.	Stage 1 Briefing: 08:15 Start Line	Stage 2 Briefing: 08:15 Start Line	Stage 3 Briefing: 08:15 Start Line
Stage 1 Briefing: 19:00 at respective race village.	Stage Start: MTB 08:30 EMTB 09:00	Stage Start: MTB 08:30 EMTB 09:00	Stage Start: MTB 08:30 EMTB 09:00
	Lunch: 12:00-15:00 Zuurberg Inn	Lunch: 12:00-15:00 Zuurberg Inn	Lunch: 11:00-14:00 Zuurberg Inn
	Cut-off Time: 14:30	Cut-off Time: 14:30	Cut-off Time: 13:00
	Stage 2 Briefing: 18:00 at respective race village.	Stage 3 Briefing: 18:00 at respective race village.	
	Dinner: 18:30 at respective race village.	Dinner: 18:30 at respective race village.	

This year’s event is not just a race; it's a hub of excitement and innovation at the Zuurberg Inn, courtyard housing the riders lounge plus exciting interactive displays from Enjoy, Thule, Sox and Vittoria Tyres.

Giant Bicycles

Ready for some extra trail-time fun?
Giant is adding a little extra excitement to this year’s GZT with Strava segment challenges on each stage.

Enjoy the ride, give it a go, and you might just bag yourself some awesome prizes along the way.

Good vibes, great trails – let’s go!



Vittoria Tyres

Stay Unstoppable with Vittoria Tyres: As our official tyre partner, Vittoria is ready to support every rider with instant tyre assistance throughout the race weekend. Tyre troubles won’t hold you back; replacement tyres are ready to roll the moment you need them.

Check out the action at their courtyard activation, featuring the latest Vittoria MTB tyres and innovative airliners. Drop by for a chance to win some fantastic prizes!



Enjoy

Gear Up with Enjoy: Our official technical cycling apparel partner, Enjoy, is setting up shop in the courtyard with the full GZT collection and their newest line of innovative, comfortable cycling gear. Special offer for all riders: snag R250.00 off your GZT collection with all online orders over R1000.00 at bit.ly/gztshop using the code: **gzt25enjoy** valid until June 30, 2025.



RUBICON

WE ADVANCE SUSTAINABLE TECHNOLOGY

Rubicon is a vertically-integrated Sustainable Technology group. We provide end-to-end technical equipment, service and software solutions to Commercial and Residential clients.

VISIT OUR WEBSITE

www.rubicon.tech



Race Village Info

Zuurberg Village Inn Race Village > Platinum & Gold Riders

- **Registration:** All riders are requested to register and collect your goody bag at the registration located in the courtyard at the Zuurberg Inn.
- **Bike Care:** After registration, please check your bike into our secure storage facility on the tennis courts, where it will be cleaned and stored overnight. To keep our rooms pristine, bikes are not allowed in hotel rooms.
- **Race Briefing:** Each evening at 18:00, join us on the patio at Zuurberg Inn for the next day's route briefing. We'll also be showcasing highlights from the day's race before dinner.
- **Meals Included:** Enjoy lunches at the Zuurberg Inn on race days, with breakfast and dinner served in the Dining Hall from Thursday evening through Sunday morning.
- **Drinks Included:** Unwind at the bar in the courtyard, open daily from 11:00 to 14:00 and 17:00 to 21:00. This is available to all our riders staying at both Zuurberg Inn and Hayterdale Trails Race Villages.
- **Coffee Station:** The Holiday coffee trailer will be set up at the Zuurberg Inn Race Village, ready to fuel riders with their morning brew from 5:30 to 9:30 and 12:00 to 18:00 in the afternoon.

Hayterdale Race Village > AfriCamps & Silver Riders

- **Registration:** All riders are requested to register and collect your goody bag at the registration tent located in the courtyard at the Zuurberg Inn.
- **Bike Care:** Check your bike into our secure facility at the tennis courts upon arrival and post-race for a complimentary wash and lube. Note: We can't transport bikes between Hayterdale Trails and Zuurberg Inn.
- **Check-In:** Upon arrival at Hayterdale Trails, head to the Clubhouse to check in.
- **Race Briefing:** Each evening at 18:00, join us at the Clubhouse at Hayterdale Trails for the next day's route briefing. We'll also be showcasing highlights from the day's race before dinner.
- **Meals Included:** Your package includes lunches at the Zuurberg Inn on race days, with breakfast and dinner available at the Hayterdale Clubhouse from Thursday evening through Sunday morning.
- **Drinks Included:** The Hayterdale Bar at the Clubhouse is your go-to spot for a relaxing drink, open daily from 11:00 to 14:00 and 17:00 to 21:00.
- **Coffee Station:** The Holiday coffee trailer will be set up at the Zuurberg Inn Race Village, ready to fuel riders with their morning brew from 5:30 to 9:30 and 12:00 to 18:00 in the afternoon.

Self Accommodation > Bronzer Riders

- **Parking:** Please use the designated parking area; parking in front of the hotel is not permitted.

All Riders

- **All Riders:** To ensure everyone gets a good night's sleep, we kindly ask that all noise be kept to a minimum after 21:30.
- **Relaxation:** After a rewarding day on the trails, grab your lunch or drinks and unwind in the Rubicon Lounge, situated in the courtyard at Zuurberg Inn. It's the perfect spot to relax and recount the day's adventures with friends.
- **Shuttle Service:** For those using the airport shuttle, we will organize group departures on Sunday.
- **Safety First:** Please drive cautiously on Zuurberg Pass, as it is part of the race route and may still have riders.
- **E-Bike Charging:** Charge your E-Bikes at the Rubicon PowerRig near the tennis courts or at the designated charging tent next to the service centre by the tennis courts. Please ensure your bike is properly connected and charging before leaving it unattended.



Sponsors



enjoy

PROXISION **X** BIB SHORTS

Normal price

R2,350.00

GZT price

R1,895.00

or **2 pairs** for

R3,200.00

Tested at the
highest level.

Learn More



Merchandise

We've teamed up with Enjoy, our official technical apparel partner, to create a stylish and performance-driven event collection designed to enhance your riding experience. Be sure to check out the entire collection, available for purchase at the Enjoy display in the courtyard at Zuurberg Inn.



Men's Atom Jacket R1,195.00



Men's Trail Tee R1,095.00



Ladies Atom Jacket R1,195.00



Ladies Trail Tee R1,095.00



enduren
natural sport nutrition

What's in your bottle... matters.

Just Natural Endurance



Route Overview

STAGE 1



Distance: 52KM
Ascent: 1050M
MTB Start Time: 08:30
EMTB Start Time: 09:00
WP 1: 16KM
WP 2: 28KM
WP 3: 35KM

STAGE 2 - E



Distance: 60KM
Ascent: 1200M
EMTB Start Time: 09:00

WP 1: 19KM
WP 2: 32KM
WP 3: 46KM



STAGE 2



Distance: 68KM
Ascent: 1300M
MTB Start Time: 08:30

WP 1: 19KM
WP 2: 40KM
WP 3: 55KM

STAGE 3



Distance: 50KM
Ascent: 1200M
Start Time: 08:30
EMTB Start Time: 09:00

WP 1: 18KM
WP 2: 33KM
WP 3: 40KM





The Future Is Foam.

The Air-Liner Light provides all the pinch-flat resistance and tire performance boost of the Air-Liner MTB, but at a fraction of the weight – it weighs even less than the sealant you need to mount the tire.



Stage One

Distance: 50km

Elevation: 1050m

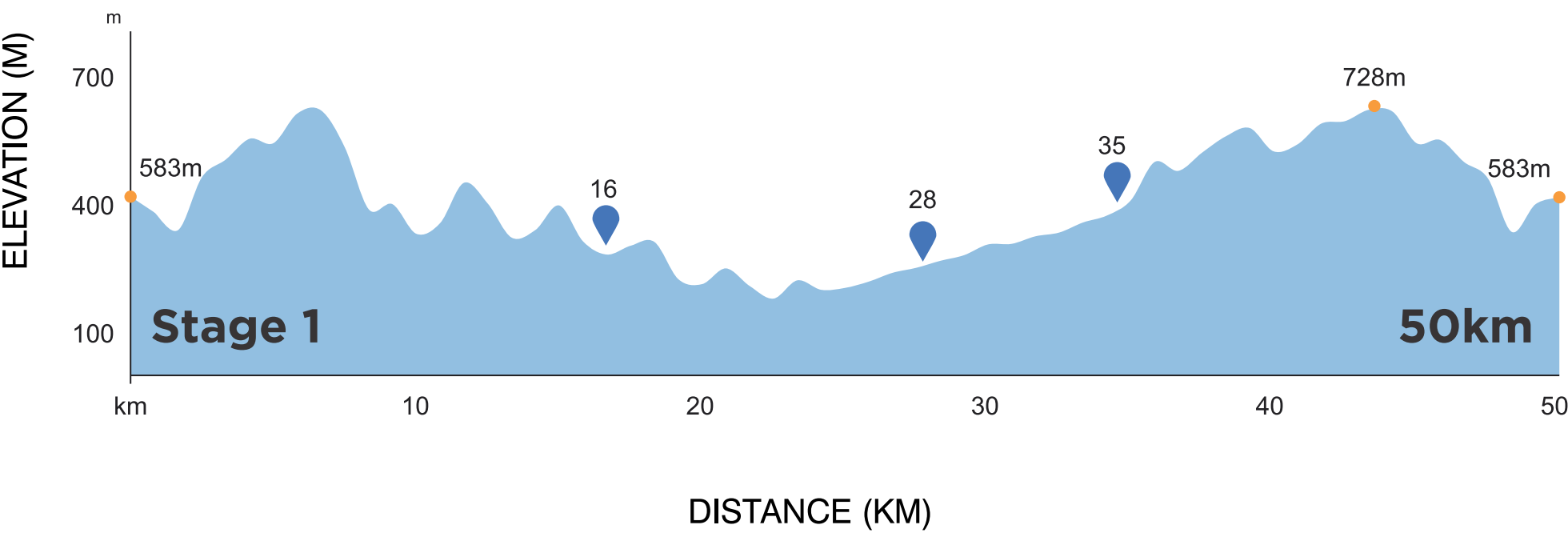
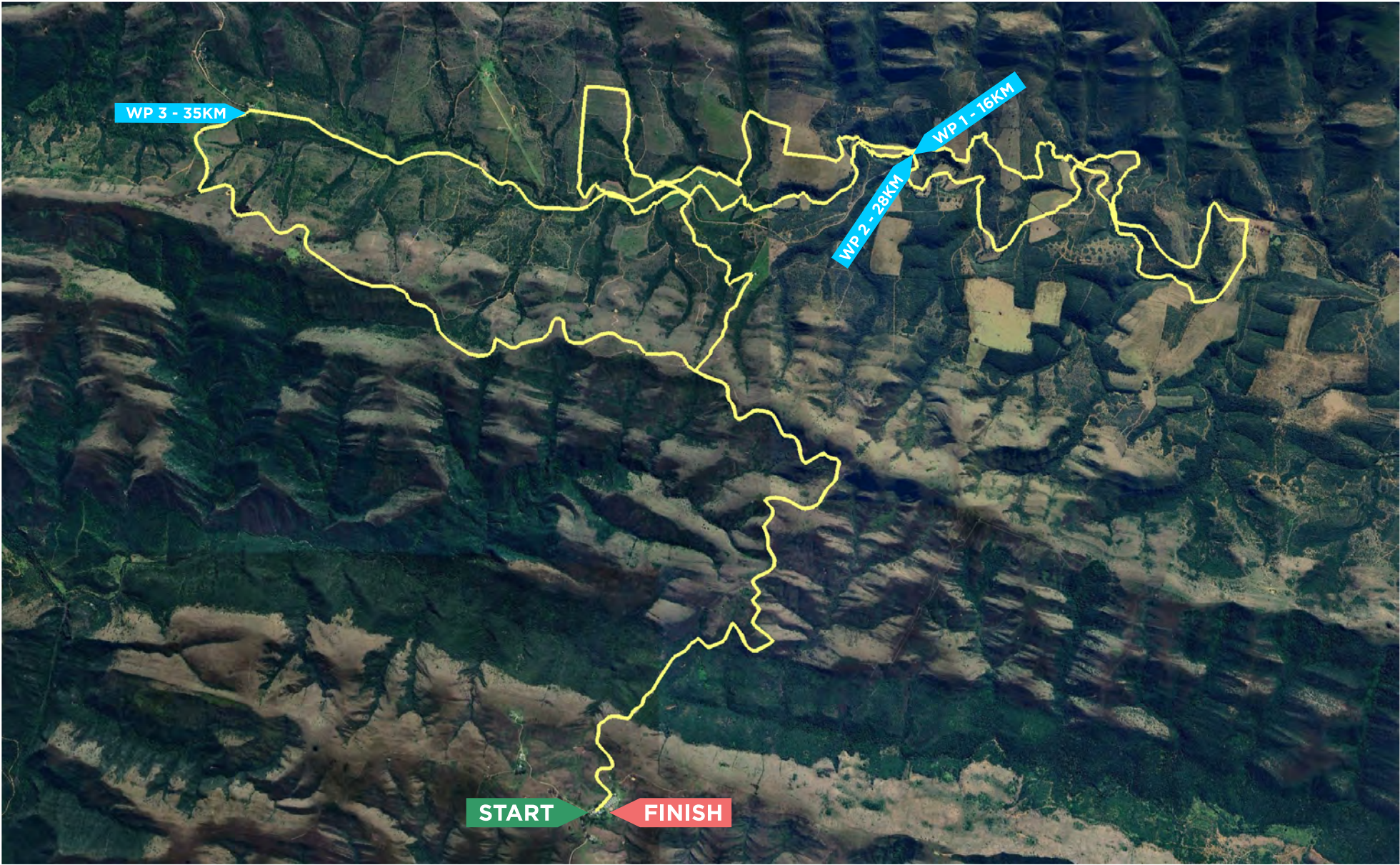
As you start your Great Zuurberg Trek north of the Zuurberg Mountain Inn, you'll be retracing the ox-wagon tracks of the Voortrekkers.

Enjoy the original road that would take you north up to waterpoint one at the 16km mark.

A long steady climb through valley takes you to the second waterpoint at 28km.

The route continues west along the Elephant Back road until you reach the next waterpoint at 35km.

This is your final waterpoint and it would be a good idea to refuel and gather your strength for the final steady climb to the finish at the Zuurberg Village Inn.



Stage Two

Distance: 68km

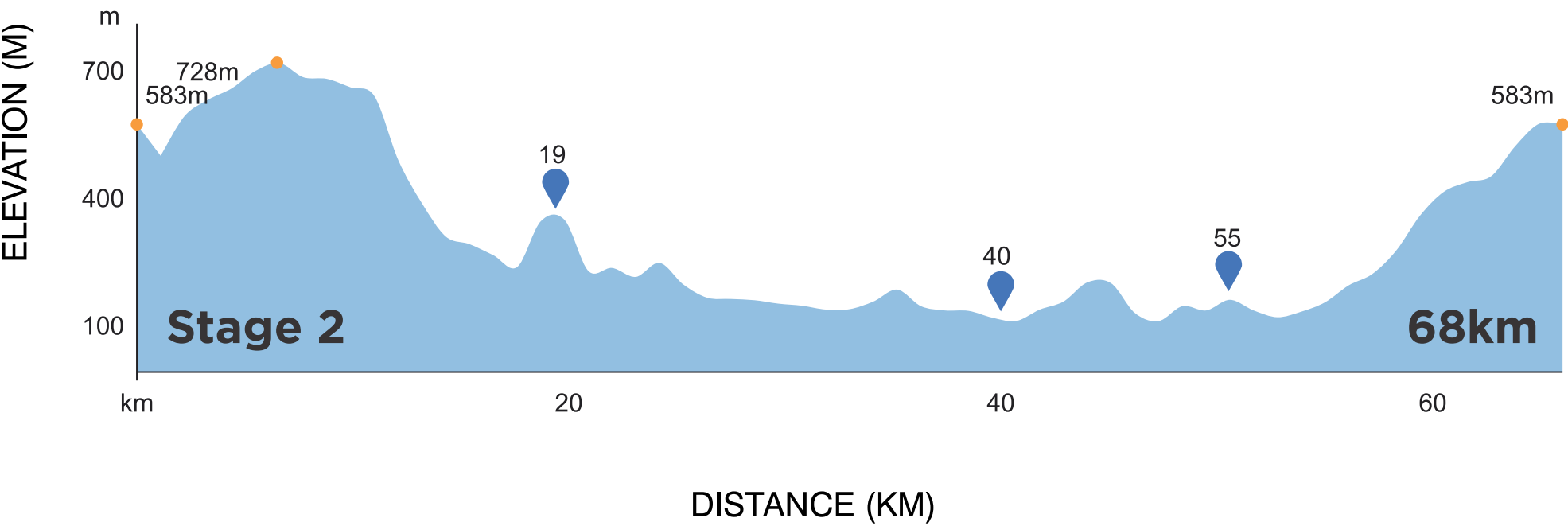
Elevation: 1300m

The initial 10km will be familiar from the previous day. After that, you'll venture off the beaten path, descending Seven Dwarfs Drop with breathtaking views into Otters Valley. Follow the Witrivier for 7km, then tackle the first major climb to reach the waterpoint atop Monti's Hill.

Enjoy the scenic vistas of Slagboom Dam during a fast descent and short climb. Pedal over undulating terrain along Slagboom Road, passing through Enon. At the 40km mark, find the second waterpoint.

Immerse yourself in the citrus orchards of the Sundays River Valley until waterpoint three at 55km. Pass through Intsomi Reserve, sample Hayterdale's singletrack.

Before settling in to the climb up the Zuurberg Pass.





SOCKS THAT ARE MADE WITH PERFORMANCE IN MIND



JOIN THE CLUB >

www.soxfootwear.com

Stage Two EMTB

Distance: 60km

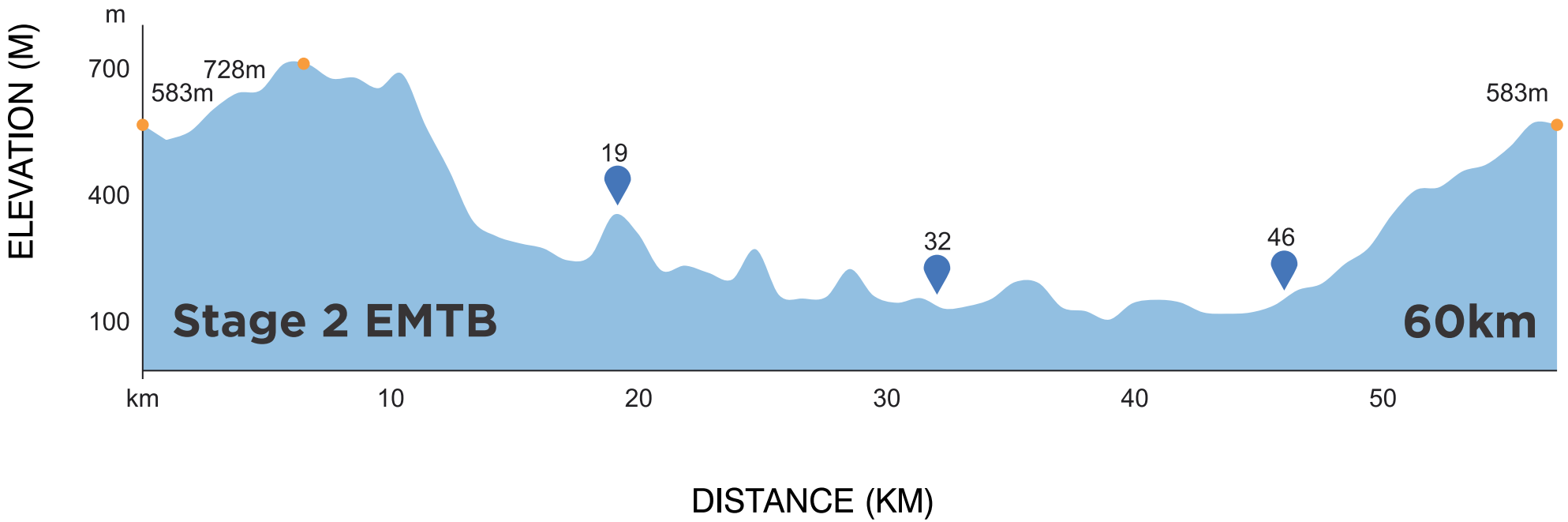
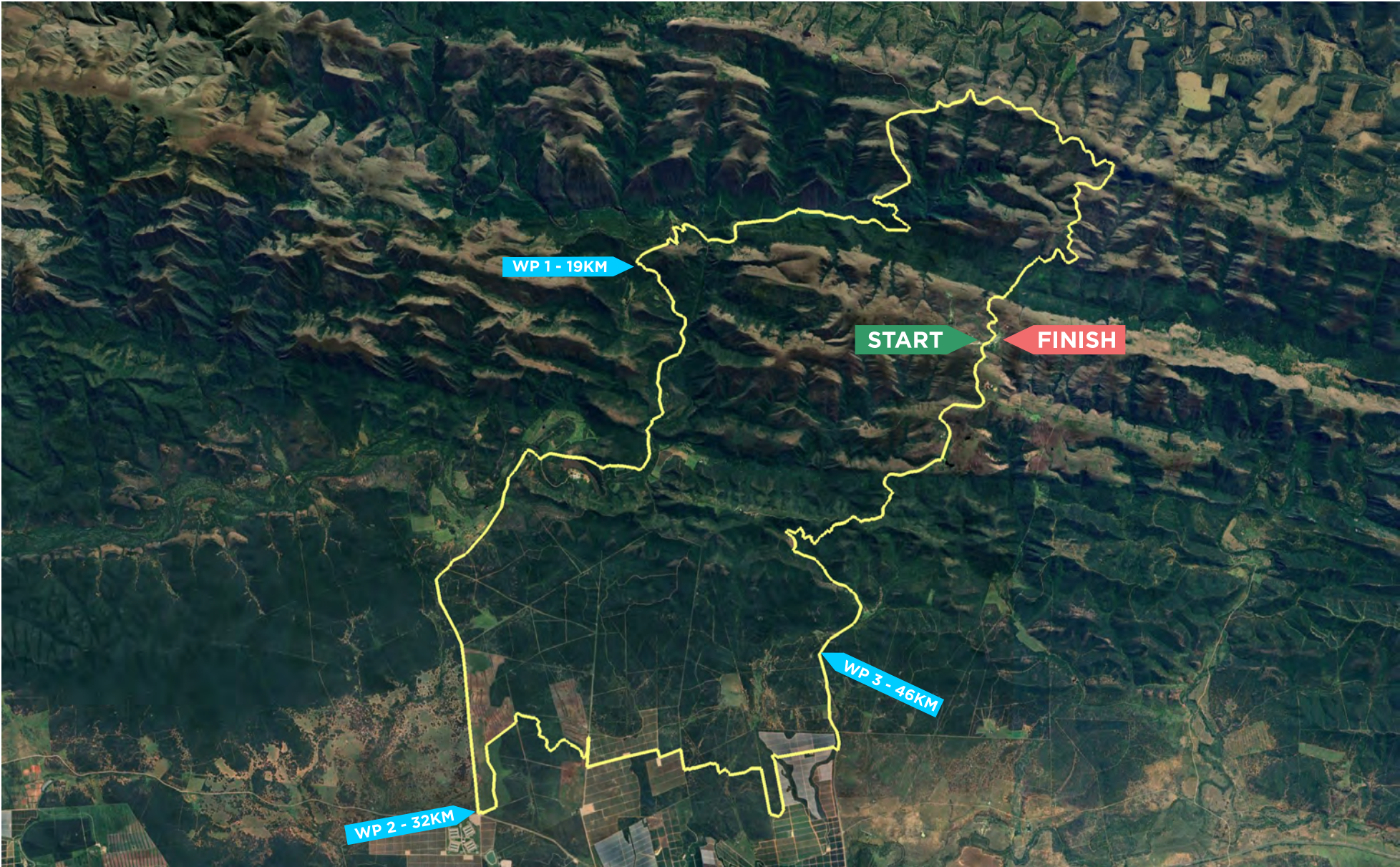
Elevation: 1200m

The initial 10km will be familiar from the previous day. After that, you'll venture off the beaten path, descending Seven Dwarfs Drop with breathtaking views into Otters Valley. Follow the Witrivier for 7km, then tackle the first major climb to reach the waterpoint atop Monti's Hill.

Enjoy the scenic vistas of Slagboom Dam during a fast descent and short climb. Pedal over undulating terrain along Slagboom Road, passing through Enon. At the 32km mark, find the second waterpoint.

Immerse yourself in the citrus orchards of the Sundays River Valley until waterpoint three at 46km. Pass through Intsomi Reserve, sample Hayterdale's singletrack, and reach the fourth waterpoint at 70km.

Before settling in to the climb up the Zuurberg Pass.




CYCLE LAB

FUEL YOUR RIDE

embrace the adventure



1

WIDEST RANGE OF
CYCLING GEAR



2

WE WILL NOT BE
BEATEN ON PRICE



3

30 DAY SATISFACTION
MONEY BACK GUARANTEE



4

AFTER SALES
SUPPORT



5

BIKE TRADE-INS
AT THE BEST PRICES



6

STATE OF THE ART
BIKE FITMENT TECH



7

RIDE NOW
PAY LATER



8

24/7 ONLINE
SHOPPING

VISIT CYCLELAB.COM

Stage Three

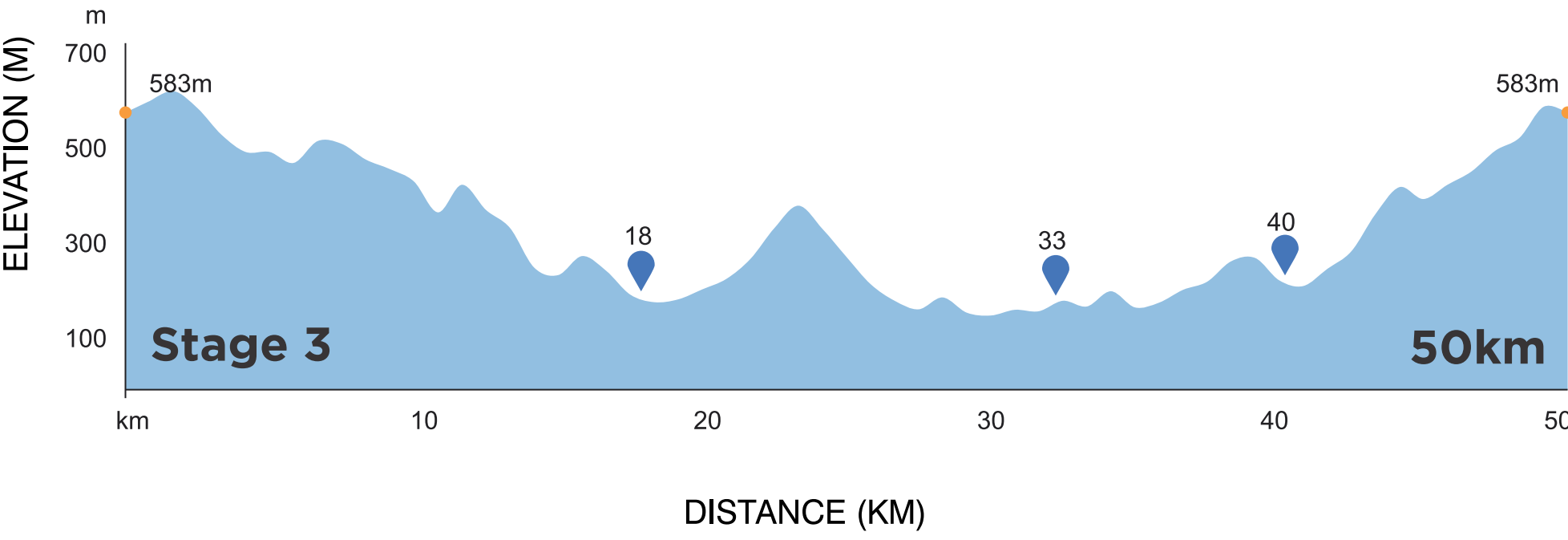
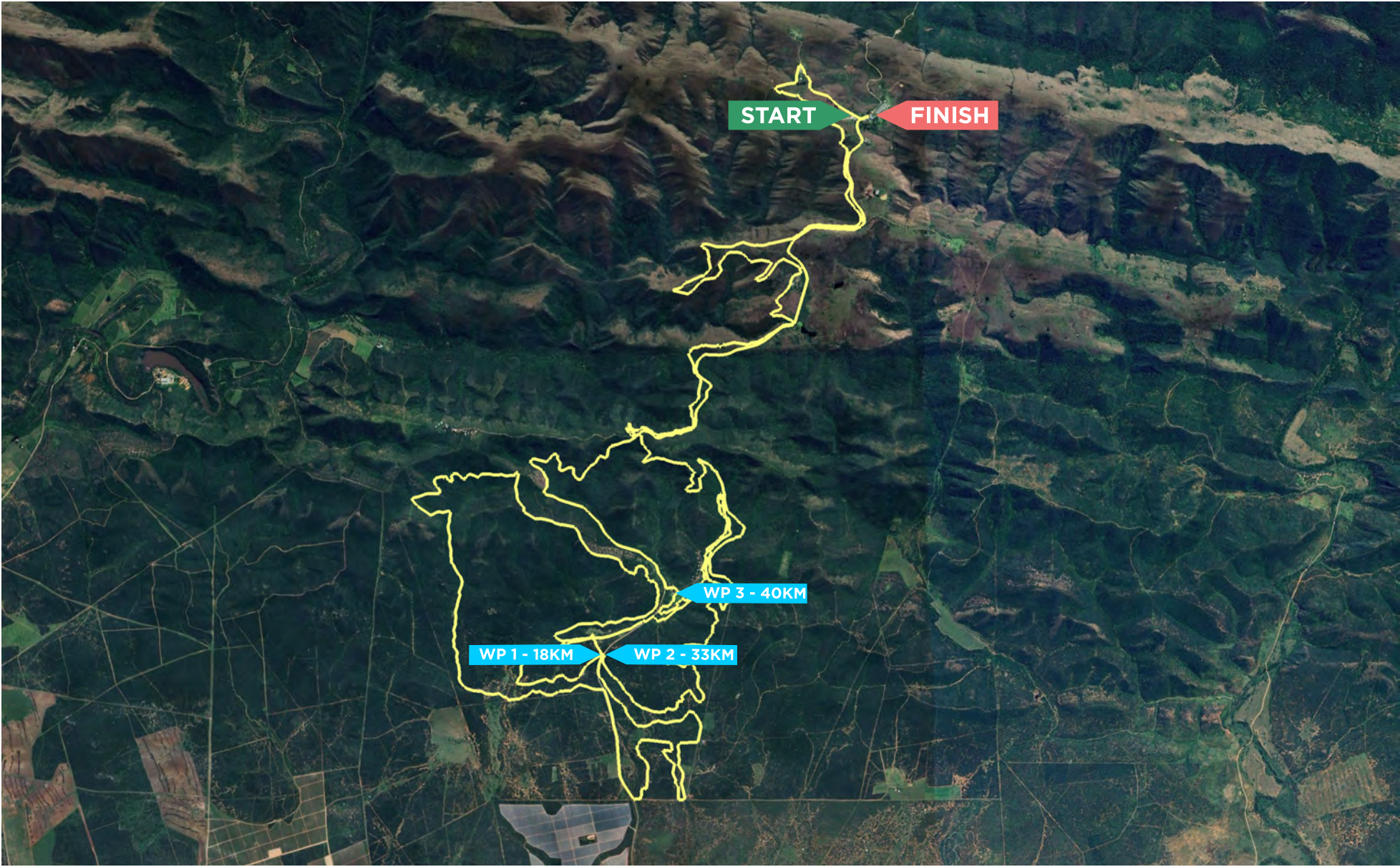
Distance: 50km

Elevation: 1200m

Stage three commences with a challenging 1km climb, spreading out the participants. After traversing the hotel grounds, you enter the singletrack, marking the start of the excitement. Brace yourself for a thrilling 5km rollercoaster ride along the Zuurberg mountains, followed by a quick ascent and a fast downhill stretch.

The Hayterdale XCO tracks await, with a demanding switchbacked climb at 10km. Enjoy a brief break on 6km of meandering jeeptracks before reaching the first waterpoint at 18km. Cross over to singletrack, embarking on a major climb toward Zorr's Rollercoaster.

The exhilarating descent leads to the second waterpoint. Prepare mentally during the 5km easy ride before entering the mountain bikers' paradise of Hayterdale XCO track, boasting thrilling rides like The Gorge, Corkscrew, Rabbit Hole & Trevor's Surprise. Finally, conquer the formidable Zuurberg Pass for the finish line.



*Works
while you
play*



squirt
CYCLING PRODUCTS

www.squirtcyclingproducts.com

Race Village Sitemap

Zuurberg Village Inn Race Village > Platinum & Gold Riders



Queries Contact: Julie 083 304 2646



Hayterdale Race Village > AfriCamps & Silver Riders



Queries Contact: Tanya 082 320 3938

SOGA[®] organic



Just squeezed & freeze[®]d

South Africa's Only Certified Organic Citrus Juice

*Do your health a favour
- choose SOGA Organic*



Fuel Your Ride

with a refreshing SOGA Organic Orange juice or
Ruby Grapefruit juice



SOGA Organic
www.sogaorganic.co.za

Grown, produced and packaged
in the Sundays River Valley



Preparation

Essential Packing

- Toiletries & towel
- Headlight for after-dark
- Earplugs for peaceful sleep
- Beanie, scarf, and gloves for evening warmth
- Warm jacket, long pants and casual clothes
- Slops and boots for comfort and mud
- Sunblock to protect from the sun
- Cellphone charger to keep you connected
- Good book or magazine to relax with
- Washing powder – just in case
- A lock for your tent for peace of mind

Equipment Checklist

- Helmet, gloves, and cycling shoes for safety and comfort
- 3 sets of cycling gear: shorts, tops, socks, arm warmers
- Windbreaker and/or rain jacket for unpredictable weather
- Sunglasses
- Sports nutrition (Hydration mix, gels and bars)
- Hydration pack (3 litres capacity) with space for spares
- GPS/Heart rate monitor and bike computer (optional) + chargers to keep you on track
- Slime, bomb and adaptor, plugs, etc., for quick fixes
- Pump, brake pads, dropout, chain, links, pins for mechanical issues
- Cable ties, duct tape for emergency repairs
- Chain lube (Squirt) and spare brake pads to keep your ride smooth

Pack smart and prepare for an unforgettable adventure!

Prizes

Get ready to turn your race weekend into a winning spree with some epic prizes from our incredible partners!

It’s easy to enter—just capture your unforgettable GZT adventure, share it on social media, and make those posts shine:

- Use the hashtag #GZTMTB.
- Tag us @greatzuurbergtrek on Facebook or Instagram.
- Score extra points by featuring any of our partner's products in your photo and tagging their South African social channels where applicable.

We’ll be drawing prizes daily, announcing winners each evening during the race briefing at your race village. So start sharing and you could snag some amazing gear:

- Giant: Great Giant gear hampers up for grabs with the Giant Strava competition
- Vittoria Tyres: Win the latest Cape Cobra MTB Tyres and Airliners.
- Thule: Grab one of their super convenient hydration backpacks.
- Enduren Sports Nutrition: Keep your energy up with their sports nutrition hampers.

Share your moments, win big, and make this GZT your most memorable yet!



Race Info Desk

All Riders

- **Wrist Bands:** Upon registration, you'll receive a colour-coded wristband. Please wear it at all times as it grants you access to meals, complimentary food, and drinks. It also includes your race number, which is necessary for bike retrieval from the storage area.
- **Bike Storage:** Your bike will be securely stored at the tennis courts at Zuurberg Inn. After each race, drop off your bike for a complimentary wash and lube. The storage area is monitored with 24/7 access-controlled security.
- **All Riders:** To ensure everyone gets a good night's sleep, we kindly ask that all noise be kept to a minimum after 21:30.
- **Shuttle Service:** For those using the airport shuttle, we will organize group departures on Sunday.
- **Safety First:** Please drive cautiously on Zuurberg Pass, as it is part of the race route and may still have riders.
- **Relaxation:** After a rewarding day on the trails, grab your lunch or drinks and unwind in the Riders Lounge, situated in the courtyard at Zuurberg Inn. It's the perfect spot to relax and recount the day's adventures with friends.
- **Race Check-In:** Make sure to check in at the start line before each stage begins. If you or your teammate need to withdraw from the race, please inform the timekeepers promptly.
- **Massage Services:** Our dedicated team of massage therapists is here to soothe your muscles after a tough day on the trails. Massages are available on Friday and Saturday and can be booked inside the massage tent at Zuurberg Mountain Inn.
- **Coffee Station:** The Holiday coffee trailer will be set up at the Zuurberg Inn Race Village, ready to fuel riders with their morning brew from 5:30 to 9:30 and 12:00 to 18:00 in the afternoon.
- **Bike Service:** Cyclo Pro is available on-site at the Zuurberg Inn tennis courts to assist with bike services and maintenance. Please note, all service costs are the responsibility of the rider.
- **Event Rules:** The Great Zuurberg Trek adheres to Cycling South Africa (CSA) rules. For detailed regulations, visit: [CSA Rules and Regulations](#). Please note, there are no spectator points along the route. Follow the route markings and signs, not the lead motorbike. The use of tow ropes is strictly prohibited. If a rider withdraws, their partner must team up with another team or face penalties.

In Case of an Emergency:

- Call or WhatsApp the emergency number listed on your number board: 083 304 2646
- Note your location or distance into the race. If necessary, send a pin drop.
- Communicate the severity of the emergency.
- Assistance or medical staff will be dispatched to your location if needed.





Customised end-to-end supply chain solutions

Releasing your true supply chain potential



Warehousing and distribution

Customised warehousing options to suit any requirement and optimal distribution solutions through our established partnership network



Advisory and consulting

Our inventory planning experts will configure a client- and industry-specific solution which improves productivity whilst reducing waste



Software-as-a-service

Operational enablement through localised transport, warehouse and inventory optimisation systems



Structured procurement solutions

Assists with improving cash flow , reducing inventory and improving local black supplier procurement spend



Contingency resourcing and risk mitigation

Providing outsourced management solutions to improve service quality, reduce costs and free internal resources



GZT



GREATZUURBERGTREK



GREATZUURBERGTREK



GREATZUURBERGTREK



GREATZUURBERGTREK.CO.ZA



GZTMTB

