



RACE GUIDE 2024



Addo
Eastern Cape



3 Days
23-26 May



168km
Distance



3550m
Climbing





Welcome

Registration

Event Schedule

Preparation

Route Overview

Stage 1 Profile

Stage 2 Profile

Stage 2 E Profile

Stage 3 Profile

Merchandise

Sponsors

Prizes

RUBICON

WE ADVANCE SUSTAINABLE TECHNOLOGY

Rubicon is a vertically-integrated Sustainable Technology group. We provide end-to-end technical equipment, service and software solutions to Commercial and Residential clients.

VISIT OUR WEBSITE

www.rubicon.tech



Welcome

Welcome to the 2024 Rubicon Great Zuurberg Trek!

We are beyond excited to have you join us for this year’s adventure through the stunning landscapes of the Addo Mountains. Whether you’re a seasoned rider or embarking on your first stage race, we promise an experience filled with thrilling trails, breath-taking views, and unforgettable moments.

This event is more than just a ride; it’s a celebration of community, passion, and the incredible spirit of adventure.

Get ready to push your limits, have fun, embrace the wild beauty of the Addo region, and create memories that will last a lifetime.

See you on the trails!

The Rubicon Great Zuurberg Trek Team

A Message From Our Sponsor

Dear Riders,

On behalf of Rubicon, I'm thrilled to welcome you to this year's Great Zuurberg Trek. It's an honour to sponsor such an exhilarating event that brings together passionate cyclists from all over. The challenging trails, breath-taking landscapes, and the spirit of camaraderie truly make this race an unforgettable experience.

As you embark on this adventure, remember that it's not just about reaching the finish line but also about enjoying every moment of the journey. Push your limits, soak in the stunning surroundings, and most importantly, have fun!

I wish you all the best and hope you have a fantastic ride.

Warm regards,
Greg Blandford
Sales Director: Energy & E-Mobility



EXTRAORDINARY - EXCLUSIVE - CHALLENGING - CAPTIVATING - MEMORABLE



EXPERIENCE ELITE

TEST RIDE THE GIANT TRANCE X ADVANCED
E+ ELITE 1 AT THE GREAT ZUURBERG TREK
AND STAND A CHANCE TO WIN



GIANT

Race Village Info

Zuurberg Village Inn Race Village > Platinum & Gold Riders

- **Registration:** All riders are requested to register and collect your goody bag at the registration located in the courtyard at the Zuurberg Inn.
- **Bike Care:** After registration, please check your bike into our secure storage facility on the tennis courts, where it will be cleaned and stored overnight. To keep our rooms pristine, bikes are not allowed in hotel rooms.
- **Race Briefing:** Each evening at 18:00, join us on the patio at Zuurberg Inn for the next day's route briefing. We'll also be showcasing highlights from the day's race before dinner.
- **Meals Included:** Enjoy lunches at the Zuurberg Inn on race days, with breakfast and dinner served in the Dining Hall from Thursday evening through Sunday morning.
- **Drinks Included:** Unwind at the Free Wheel Bar on the poolside patio, open daily from 11:00 to 14:00 and 17:00 to 21:00. This is available to all our riders staying at both Zuurberg Inn and Hayterdale Trails Race Villages.

Hayterdale Race Village > AfriCamps & Silver Riders

- **Registration:** All riders are requested to register and collect your goody bag at the registration tent located in the courtyard at the Zuurberg Inn.
- **Bike Care:** Check your bike into our secure facility at the tennis courts upon arrival and post-race for a complimentary wash and lube. Note: We can't transport bikes between Hayterdale Trails and Zuurberg Inn.
- **Check-In:** Upon arrival at Hayterdale Trails, head to the Clubhouse to check in.
- **Race Briefing:** Each evening at 18:00, join us at the Clubhouse at Hayterdale Trails for the next day's route briefing. We'll also be showcasing highlights from the day's race before dinner.
- **Meals Included:** Your package includes lunches at the Zuurberg Inn on race days, with breakfast and dinner available at the Hayterdale Clubhouse from Thursday evening through Sunday morning.
- **Drinks Included:** The Hayterdale Bar at the Clubhouse is your go-to spot for a relaxing drink, open daily from 11:00 to 14:00 and 17:00 to 21:00.

Self Accommodation > Bronzer Riders

- **Parking:** Please use the designated parking area; parking in front of the hotel is not permitted.

All Riders

- **All Riders:** To ensure everyone gets a good night's sleep, we kindly ask that all noise be kept to a minimum after 21:30.
- **Relaxation:** After a rewarding day on the trails, grab your lunch or drinks and unwind in the Rubicon Lounge, situated in the courtyard at Zuurberg Inn. It's the perfect spot to relax and recount the day's adventures with friends.
- **Shuttle Service:** For those using the airport shuttle, we will organize group departures on Sunday.
- **Safety First:** Please drive cautiously on Zuurberg Pass, as it is part of the race route and may still have riders.
- **E-Bike Charging:** Charge your E-Bikes at the Rubicon PowerRig in the courtyard or at the designated charging tent next to the service center by the tennis courts. Please ensure your bike is properly connected and charging before leaving it unattended.



Event Schedule

23 MAY	24 MAY	25 MAY	26 MAY
Registration	Stage 1	Stage 2	Stage 3
Registration: 16:00-19:00 at Zuurberg Inn	Breakfast: 06:30-08:00	Breakfast: 06:30-08:00	Breakfast: 06:30-08:00
Dinner: 18:30 at respective race village.	Stage 1 Briefing: 08:15 Start Line	Stage 2 Briefing: 07:45 Start Line	Stage 3 Briefing: 07:45 Start Line
Stage 1 Briefing: 19:00 at respective race village.	Stage Start: MTB 08:30 EMTB 09:00	Stage Start: MTB 08:00 EMTB 08:30	Stage Start: MTB 08:00 EMTB 08:30
	Lunch: 12:00-15:00 Zuurberg Inn	Lunch: 12:00-15:00 Zuurberg Inn	Lunch: 11:00-14:00 Zuurberg Inn
	Cut-off Time: 14:00	Cut-off Time: 14:00	Cut-off Time: 13:00
	Stage 2 Briefing: 18:00 at respective race village.	Stage 3 Briefing: 18:00 at respective race village.	
	Dinner: 18:30 at respective race village.	Dinner: 18:30 at respective race village.	

This year’s event is not just a race; it's a hub of excitement and innovation at the Zuurberg Inn, courtyard housing the Rubicon riders lounge and PowerRig plus exciting interactive displays from Giant, Vittoria Tyres and Enjoy.

Giant Bicycles

Feel the Rush with Giant Bicycles: Dive into the world of Giant as they showcase their latest mountain bikes right in the courtyard. Get hands-on with a fleet of test bikes, and don't miss your chance to enter their competition. Epic prizes await those who come and experience the best of what Giant has to offer the latest



Vittoria Tyres

Stay Unstoppable with Vittoria Tyres: As our official tyre partner, Vittoria is ready to support every rider with instant tyre assistance throughout the race weekend. Tyre troubles won’t hold you back; replacement tyres are ready to roll the moment you need them. Check out the action at their courtyard activation, featuring the latest Vittoria MTB tyres and innovative airliners. Drop by for a chance to win some fantastic prizes!



Enjoy

Gear Up with Enjoy: Our official technical cycling apparel partner, Enjoy, is setting up shop in the courtyard with the full GZT collection and their newest line of innovative, comfortable cycling gear. Special offer for all riders: snag 25% off your purchase at www.enjoy.cc using the code ENJOY+GZT, valid until June 30, 2024.





New PROXISION Bib Shorts
New Era of Racing

enjoy
WWW.ENJOY.CC

Use Code **ENJOY+GZT** for 25% off!
Valid until 30.06.2024

Merchandise

We've teamed up with Enjoy, our official technical apparel partner, to create a stylish and performance-driven event collection designed to enhance your riding experience. Be sure to check out the entire collection, available for purchase at the Enjoy display in the courtyard at Zuurberg Inn.



Atom Jacket R1,195.00



Regular Fit Jersey R995.00



Atom Gilet R1,095.00



Race Fit Jersey R1,350.00



Trail Tee R995.00



MTB Shorts R1,350.00



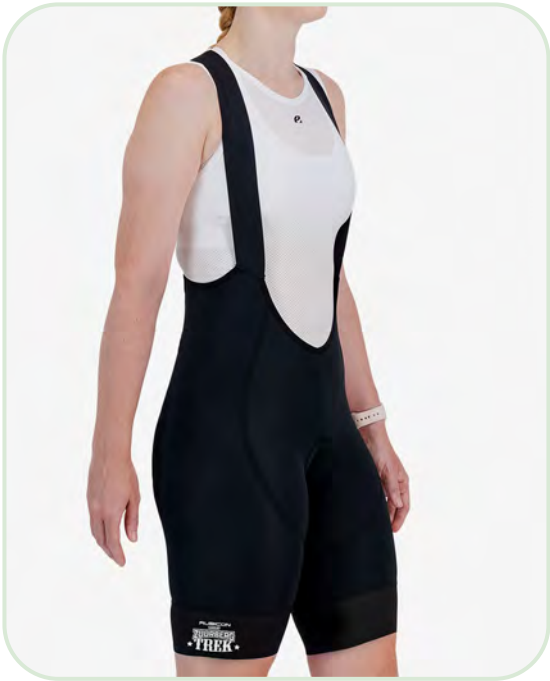
Atom Jacket R1,195.00



Regular Fit Jersey R995.00



Atom Gilet R1,095.00



Bib Shorts R2,275.00



Trail Tee R995.00



Race Fit Jersey R1,350.00





Montagu

TRUSTED QUALITY SNACKS

HIGHER ENERGY SNACK

ALMONDS, CASHES, TROPICAL MIX,
CRANBERRIES, MACADAMIA NUTS

✓ HIGH IN ENERGY
✓ HIGH IN DIETARY FIBRE
✓ NATURALLY CHOLESTEROL FREE
✓ HIGH IN MONOUNSATURATED FAT

GREAT TASTE • QUALITY
♥
**MONTAGU
GOODNESS**
ETHICALLY SOURCED

Route Overview

STAGE 1



Distance: 50KM
Ascent: 1050M
MTB Start Time: 08:00
EMTB Start Time: 08:30
WP 1: 16KM
WP 2: 28KM
WP 3: 35KM

STAGE 2 - E



Distance: 60KM
Ascent: 1200M
EMTB Start Time: 08:30

WP 1: 19KM
WP 2: 32KM
WP 3: 44KM



STAGE 2



Distance: 68KM
Ascent: 1200M
MTB Start Time: 08:00

WP 1: 19KM
WP 2: 40KM
WP 3: 55KM

STAGE 3



Distance: 50KM
Ascent: 1200M
Start Time: 08:00
EMTB Start Time: 08:30

WP 1: 18KM
WP 2: 33KM
WP 3: 40KM



Stage One

Distance: 50km

Elevation: 1050m

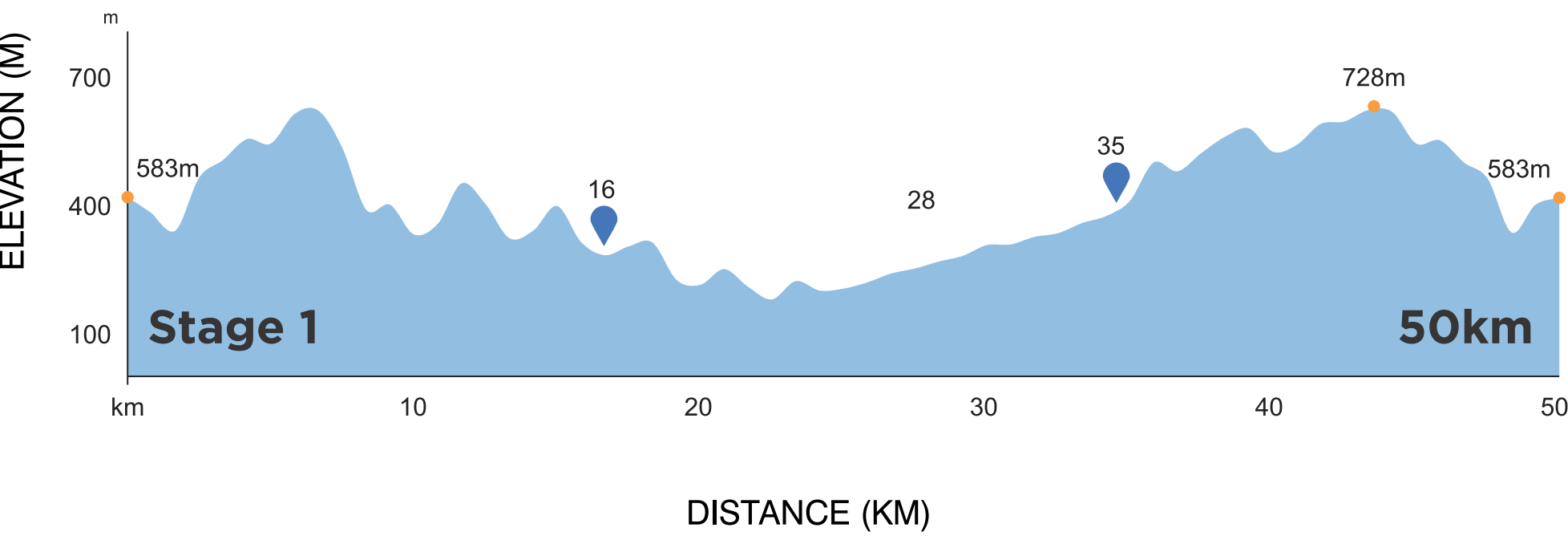
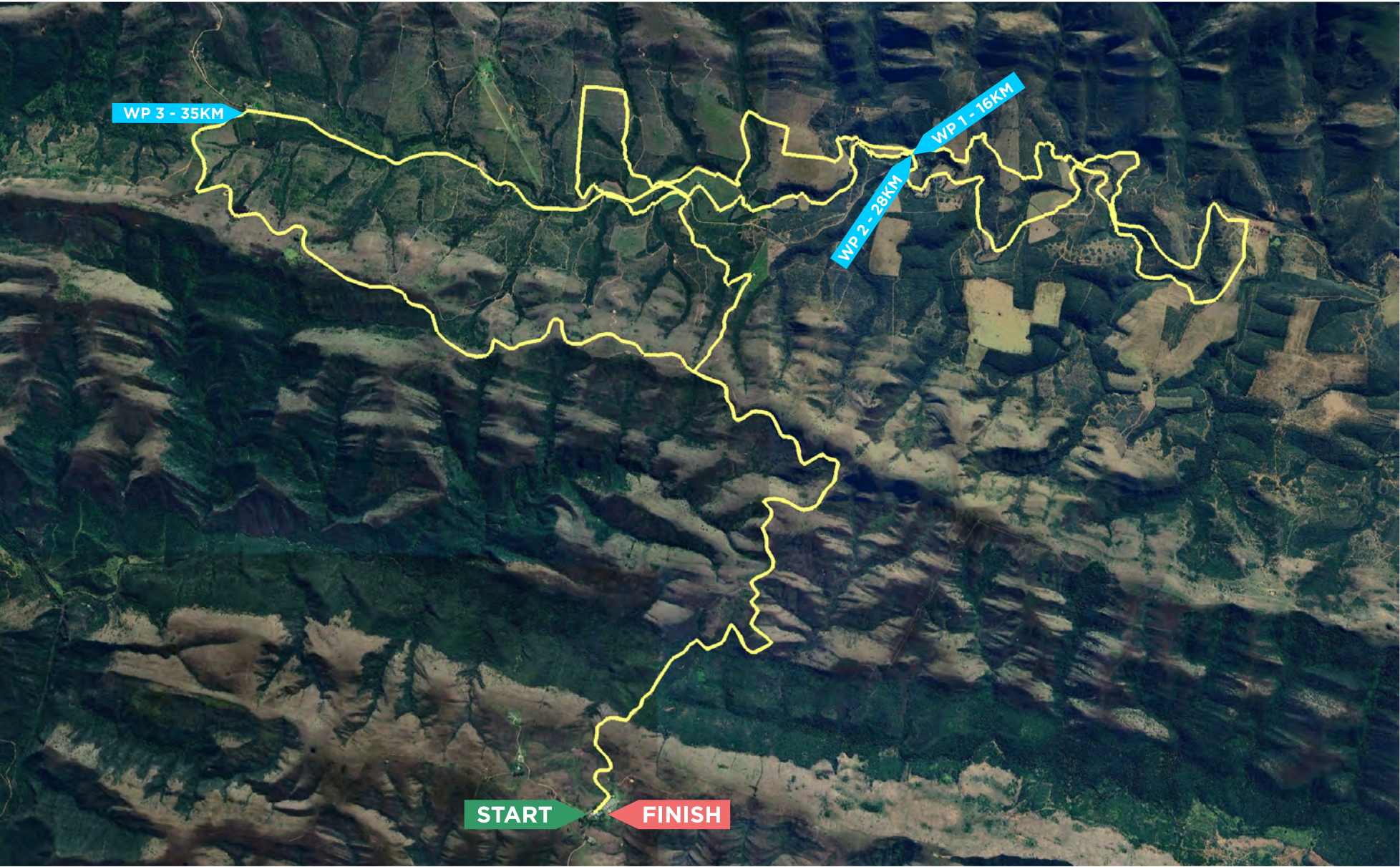
As you start your Great Zuurberg Trek north of the Zuurberg Mountain Inn, you'll be retracing the ox-wagon tracks of the Voortrekkers.

Enjoy the original road that would take you north up to waterpoint one at the 16km mark.

A long steady climb through valley takes you to the second waterpoint at 28km.

The route continues west along the Elephant Back road until you reach the next waterpoint at 35km.

This is your final waterpoint and it would be a good idea to refuel and gather your strength for the final steady climb to the finish at the Zuurberg Village Inn.



Stage Two

Distance: 68km

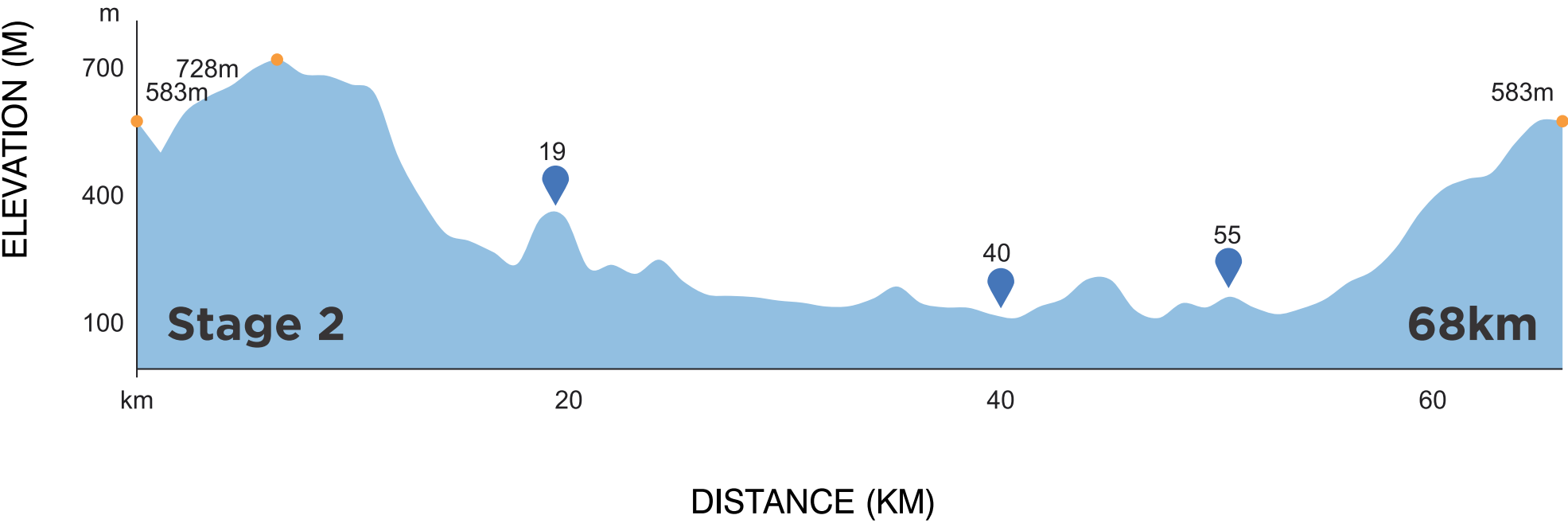
Elevation: 1300m

The initial 10km will be familiar from the previous day. After that, you'll venture off the beaten path, descending Seven Dwarfs Drop with breathtaking views into Otters Valley. Follow the Witrivier for 7km, then tackle the first major climb to reach the waterpoint atop Monti's Hill.

Enjoy the scenic vistas of Slagboom Dam during a fast descent and short climb. Pedal over undulating terrain along Slagboom Road, passing through Enon. At the 40km mark, find the second waterpoint.

Immerse yourself in the citrus orchards of the Sundays River Valley until waterpoint three at 55km. Pass through Intsomi Reserve, sample Hayterdale's singletrack.

Before settling in to the climb up the Zuurberg Pass.





The Future Is Foam.

The Air-Liner Light provides all the pinch-flat resistance and tire performance boost of the Air-Liner MTB, but at a fraction of the weight it weighs even less than the sealant you need to mount the tire.

 **vittoria**

Stage Two EMTB

Distance: 60km

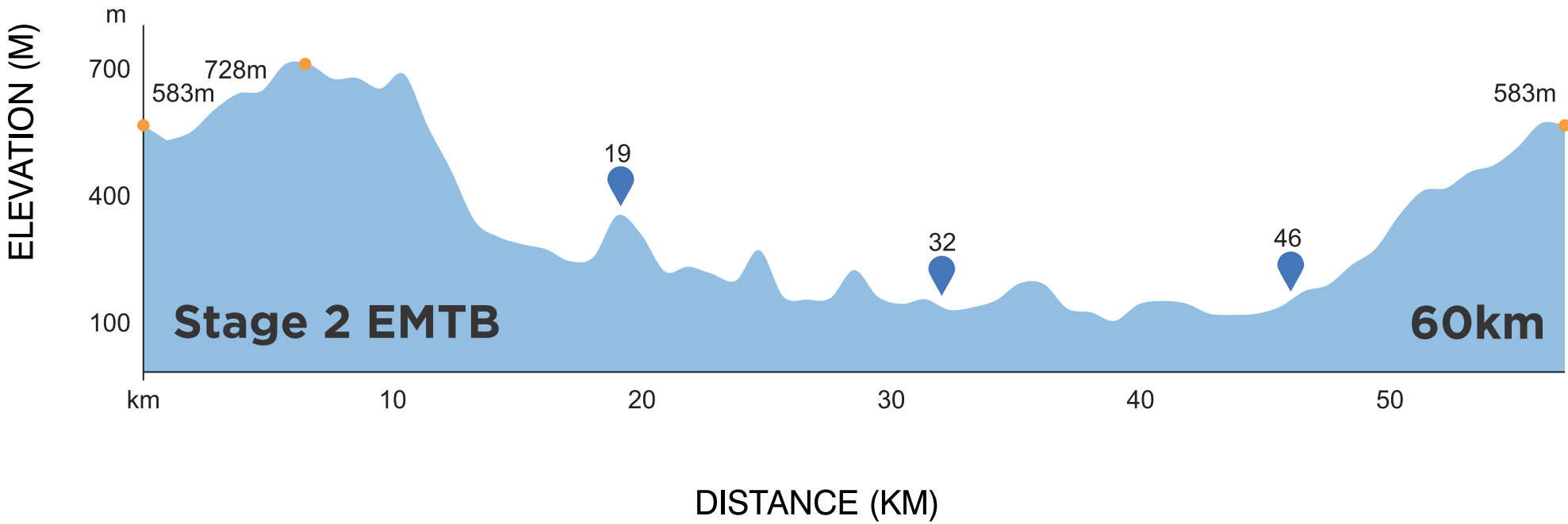
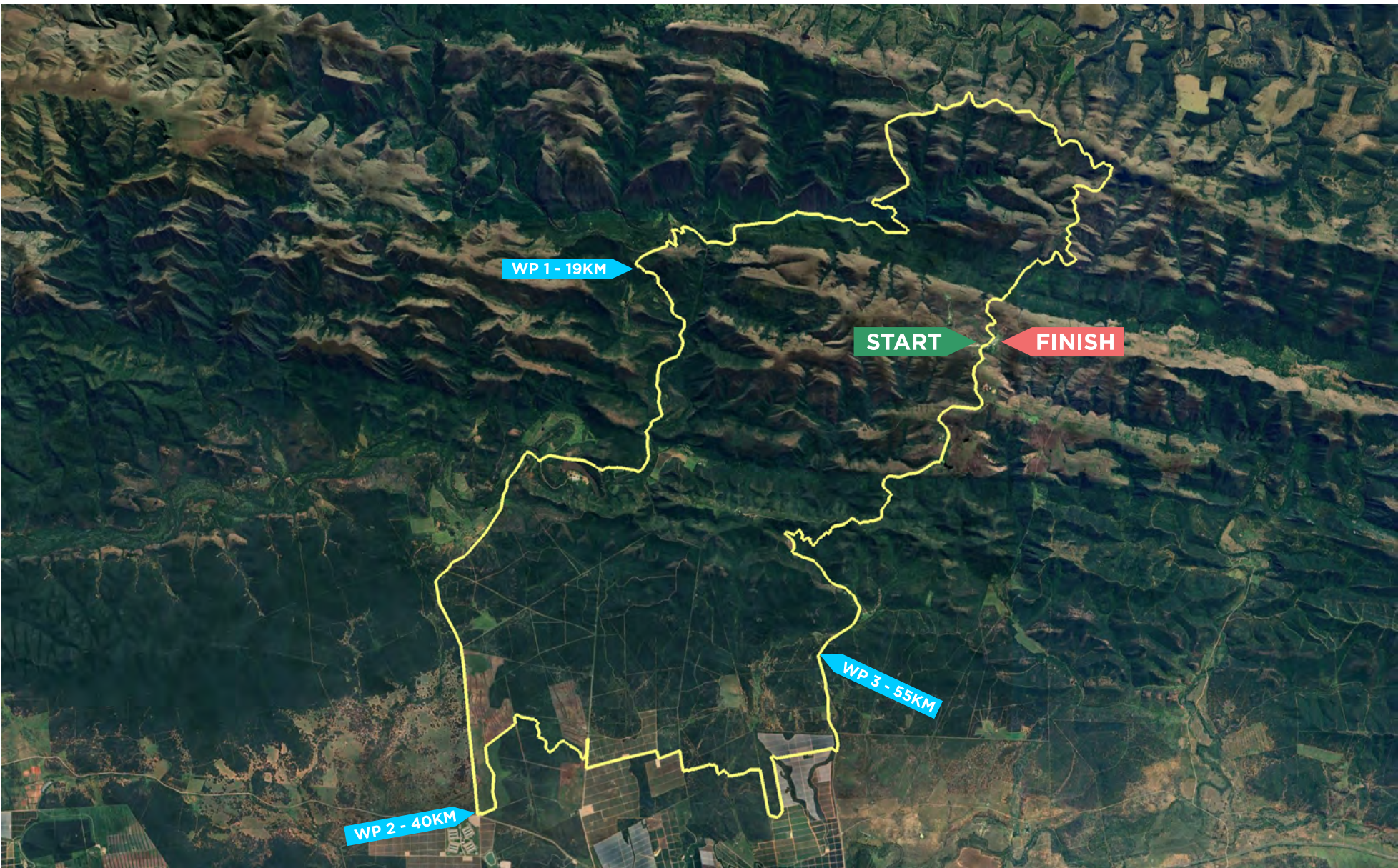
Elevation: 1200m

The initial 10km will be familiar from the previous day. After that, you'll venture off the beaten path, descending Seven Dwarfs Drop with breathtaking views into Otters Valley. Follow the Witrivier for 7km, then tackle the first major climb to reach the waterpoint atop Monti's Hill.

Enjoy the scenic vistas of Slagboom Dam during a fast descent and short climb. Pedal over undulating terrain along Slagboom Road, passing through Enon. At the 32km mark, find the second waterpoint.

Immerse yourself in the citrus orchards of the Sundays River Valley until waterpoint three at 46km. Pass through Intsomi Reserve, sample Hayterdale's singletrack, and reach the fourth waterpoint at 70km.

Before settling in to the climb up the Zuurberg Pass.



NAMEDSPORT®
SUPERFOOD

#STAY
TRAINED



WWW.NAMEDSPORT.COM/ZA

Stage Three

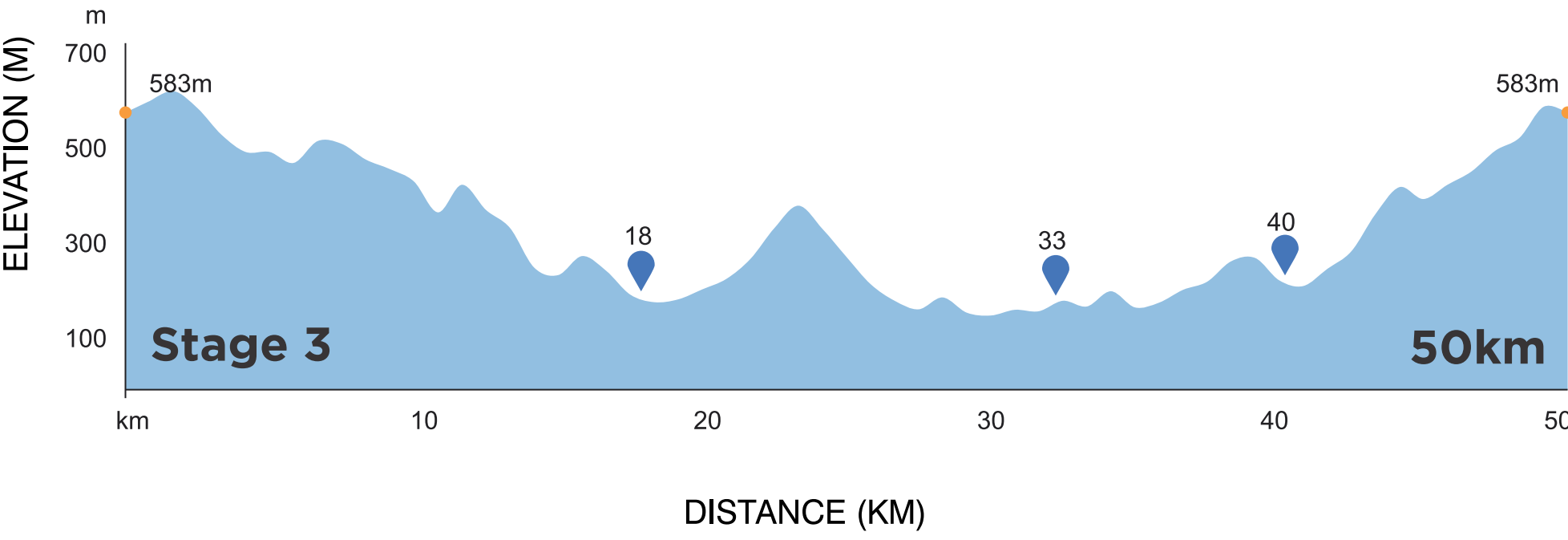
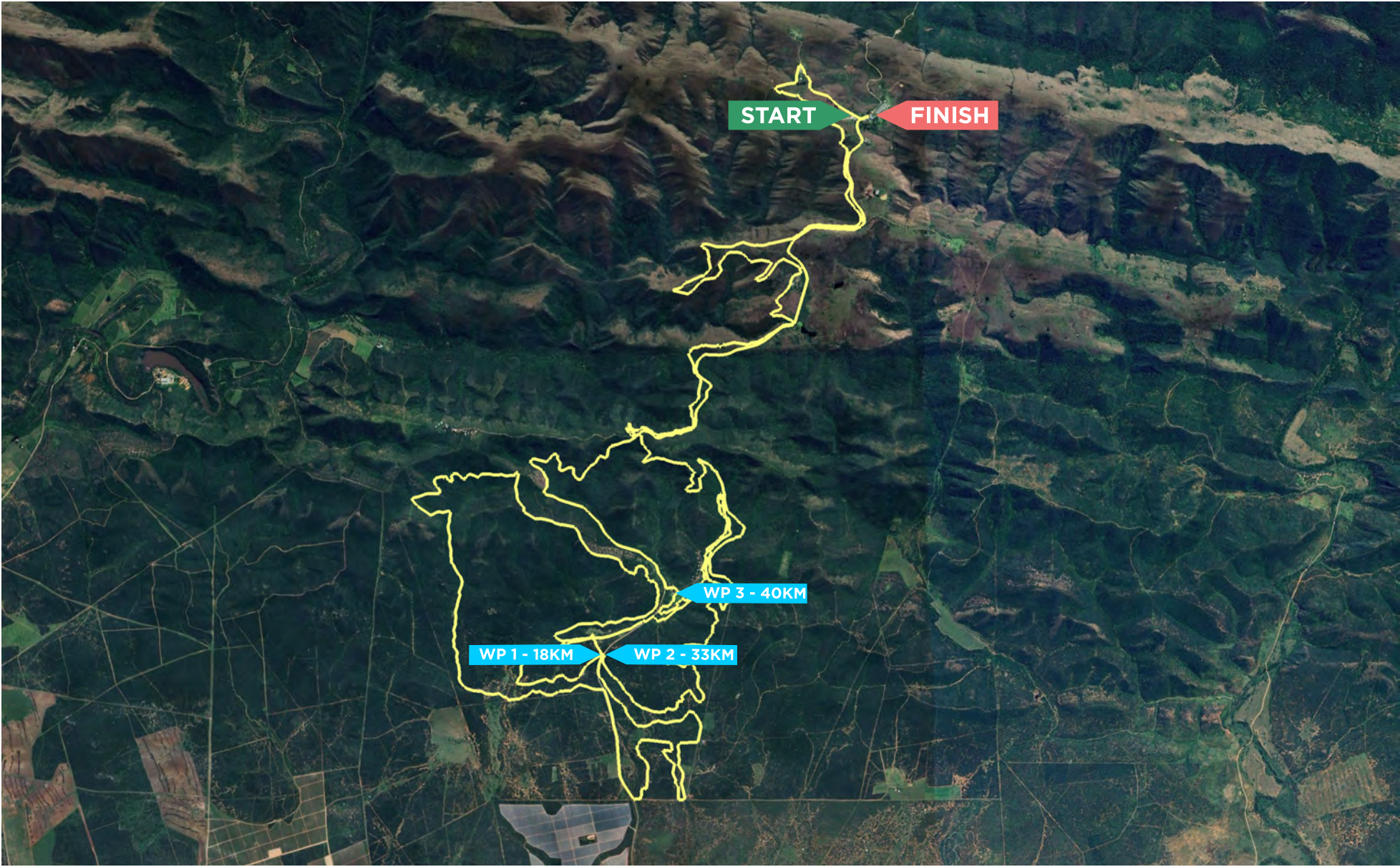
Distance: 50km

Elevation: 1200m

Stage three commences with a challenging 1km climb, spreading out the participants. After traversing the hotel grounds, you enter the singletrack, marking the start of the excitement. Brace yourself for a thrilling 5km rollercoaster ride along the Zuurberg mountains, followed by a quick ascent and a fast downhill stretch.

The Hayterdale XCO tracks await, with a demanding switchbacked climb at 10km. Enjoy a brief break on 6km of meandering jeeptracks before reaching the first waterpoint at 18km. Cross over to singletrack, embarking on a major climb toward Zorr's Rollercoaster.

The exhilarating descent leads to the second waterpoint. Prepare mentally during the 5km easy ride before entering the mountain bikers' paradise of Hayterdale XCO track, boasting thrilling rides like The Gorge, Corkscrew, Rabbit Hole & Trevor's Surprise. Finally, conquer the formidable Zuurberg Pass for the finish line.



SOGA[®] organic



Just Squeezed & Freezed[®]

South Africa's Only Certified Organic Citrus Juice

*Do your health a favour
-choose SOGA Organic*



Recharge

with a refreshing SOGA Organic
Orange juice or Ruby Grapefruit juice



SOGA Organic
www.sogaorganic.co.za

Grown, produced and packaged
in the Sundays River Valley



Race Village Sitemap

Zuurberg Village Inn Race Village > Platinum & Gold Riders



Queries Contact: John 082 767 3910 | Rene 073 985 8345



Hayterdale Race Village > AfriCamps & Silver Riders



Queries Contact: Liezel 076 837 7474 | Trevor 083 616 0138

Preparation

Essential Packing

- Toiletries & towel
- Headlight for after-dark
- Earplugs for peaceful sleep
- Beanie, scarf, and gloves for evening warmth
- Warm jacket, long pants and casual clothes
- Slops and boots for comfort and mud
- Sunblock to protect from the sun
- Cellphone charger to keep you connected
- Good book or magazine to relax with
- Washing powder – just in case
- A lock for your tent for peace of mind

Equipment Checklist

- Helmet, gloves, and cycling shoes for safety and comfort
- 3 sets of cycling gear: shorts, tops, socks, arm warmers
- Windbreaker and/or rain jacket for unpredictable weather
- Sunglasses
- Sports nutrition (Hydration mix, gels and bars)
- Hydration pack (3 litres capacity) with space for spares
- GPS/Heart rate monitor and bike computer (optional) + chargers to keep you on track
- Slime, bomb and adaptor, plugs, etc., for quick fixes
- Pump, brake pads, dropout, chain, links, pins for mechanical issues
- Cable ties, duct tape for emergency repairs
- Chain lube (Squirt) and spare brake pads to keep your ride smooth

Pack smart and prepare for an unforgettable adventure!

Prizes

Get ready to turn your race weekend into a winning spree with some epic prizes from our incredible partners!

It’s easy to enter—just capture your unforgettable GZT adventure, share it on social media, and make those posts shine:

- Use the hashtag #GZTMTB.
- Tag us @greatzuurbergtrek on Facebook or Instagram.
- Score extra points by featuring any of our partner's products in your photo and tagging their South African social channels where applicable.

We’ll be drawing prizes daily, announcing winners each evening during the race briefing at your race village. So start sharing and you could snag some amazing gear:

- Vittoria Tyres: Win the latest Cape Cobra MTB Tyres and Airliners.
- Thule: Grab on of their super convenient Roundtrip duffel bags.
- Leatt: Take home one of their top-tier MTB helmets.
- Namedsport: Keep your energy up with their sports nutrition hampers.
- Squirt Lube: Ensure your bike is in top form with their cleaning and lube hampers.
- Montagu Snacks: Stay fueled with healthy, energising snack boxes.
- AfriCamps: Win a relaxing weekend getaway at any of their locations nationwide.

Share your moments, win big, and make this GZT your most memorable yet!



Race Info Desk

All Riders

- **Wrist Bands:** Upon registration, you'll receive a color-coded wristband. Please wear it at all times as it grants you access to meals, complimentary food, and drinks. It also includes your race number, which is necessary for bike retrieval from the storage area.
- **Bike Storage:** Your bike will be securely stored at the tennis courts at Zuurberg Inn. After each race, drop off your bike for a complimentary wash and lube. The storage area is monitored with 24/7 access-controlled security.
- **All Riders:** To ensure everyone gets a good night's sleep, we kindly ask that all noise be kept to a minimum after 21:30.
- **Shuttle Service:** For those using the airport shuttle, we will organize group departures on Sunday.
- **Safety First:** Please drive cautiously on Zuurberg Pass, as it is part of the race route and may still have riders.
- **Relaxation:** After a rewarding day on the trails, grab your lunch or drinks and unwind in the Rubicon Lounge, situated in the courtyard at Zuurberg Inn. It's the perfect spot to relax and recount the day's adventures with friends.
- **Race Check-In:** Make sure to check in at the start line before each stage begins. If you or your teammate need to withdraw from the race, please inform the timekeepers promptly.
- **Massage Services:** Our dedicated team of massage therapists is here to soothe your muscles after a tough day on the trails. Massages are available on Friday and Saturday and can be booked inside the massage tent at Zuurberg Mountain Inn.
- **Going Green with Coffee:** In our commitment to sustainability, each rider will receive an official GZT coffee cup in their goody bag. Bring your cup to receive coffee refills throughout the event. Remember to look after your cup, no Rubicon Great Zuurberg Trek cup unfortunately means no free coffee.
- **Bike Service:** Cyclo Pro is available on-site at the Zuurberg Inn tennis courts to assist with bike services and maintenance. Please note, all service costs are the responsibility of the rider.
- **Event Rules:** The Great Zuurberg Trek adheres to Cycling South Africa (CSA) rules. For detailed regulations, visit: [CSA Rules and Regulations](#). Please note, there are no spectator points along the route. Follow the route markings and signs, not the lead motorbike. The use of tow ropes is strictly prohibited. If a rider withdraws, their partner must team up with another team or face penalties.

In Case of an Emergency:

- Call or WhatsApp the emergency number listed on your number board: 066 162 8301
- Note your location or distance into the race. If necessary, send a pin drop.
- Communicate the severity of the emergency.
- Assistance or medical staff will be dispatched to your location if needed.



Sponsors

RUBICON

GIANT

enjoy

Montagu
TRUSTED QUALITY SNACKS

SEGA[®]
organic

ENGELI

LEATT

DB
DARLING BREW

TSITSIKAMMA
Spring Water

AFRICAMPS
BOUTIQUE GLAMPING

squirt

Fitch & Leedes

THULE[®]
SWEDEN

vittoria[®]



GREATZUURBERGTREK



GREATZUURBERGTREK



GREATZUURBERGTREK



GREATZUURBERGTREK.CO.ZA



GZTMTB

